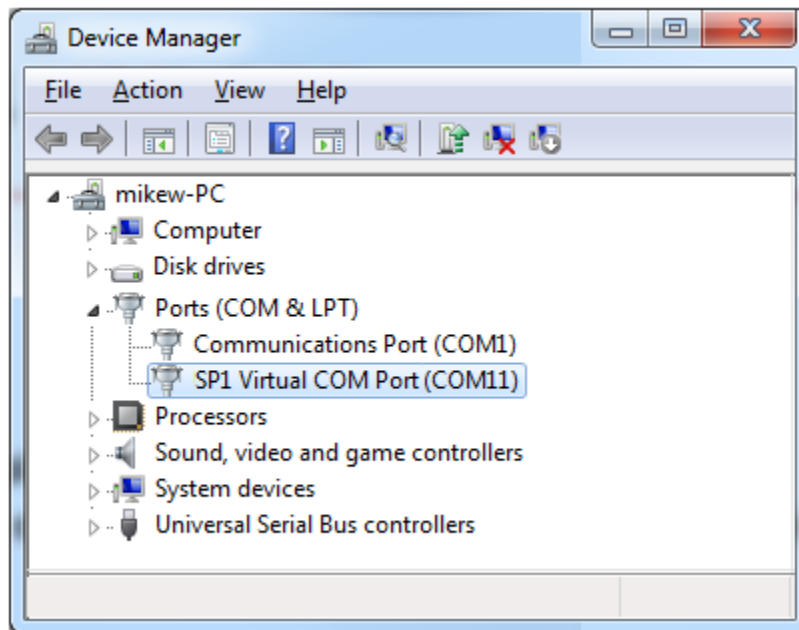
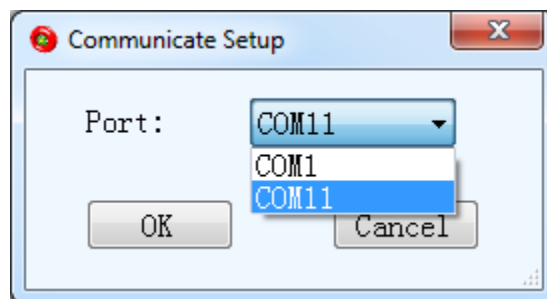


- 1) Download the driver “CDC_Demo.inf” and Scanner Configuration Manager utility “SCM.exe” to your computer
- 2) Using your SP scanner, hold the [UP] + [DOWN] keys to enter “Menu Mode”
- 3) Select MAIN MENU, then REMOTE SETTING
- 4) When SP Scanner LCD Displays “REMOTE SETTING”
- 5) Connect your SP scanner to the computer with the USB / Communication cable
- 6) The computer will request the location of a driver to use. Point the driver installation wizard to the location of the “CDC_Demo.inf” file
- 7) Consult Windows’ device manager’s Ports section to find the COM port number for the SP scanner



- 8) Open the Scanner Configuration Manager utility (“SCM.exe) and select Settings > Communication setup from the menu bar, choose the device’s com port number from the drop-down list and hit “OK”



- 9) Within the software, change any settings to accommodate what you need
- 10) When ready, click the download button or choose Settings > Download from the menu bar to send the configuration to your scanner