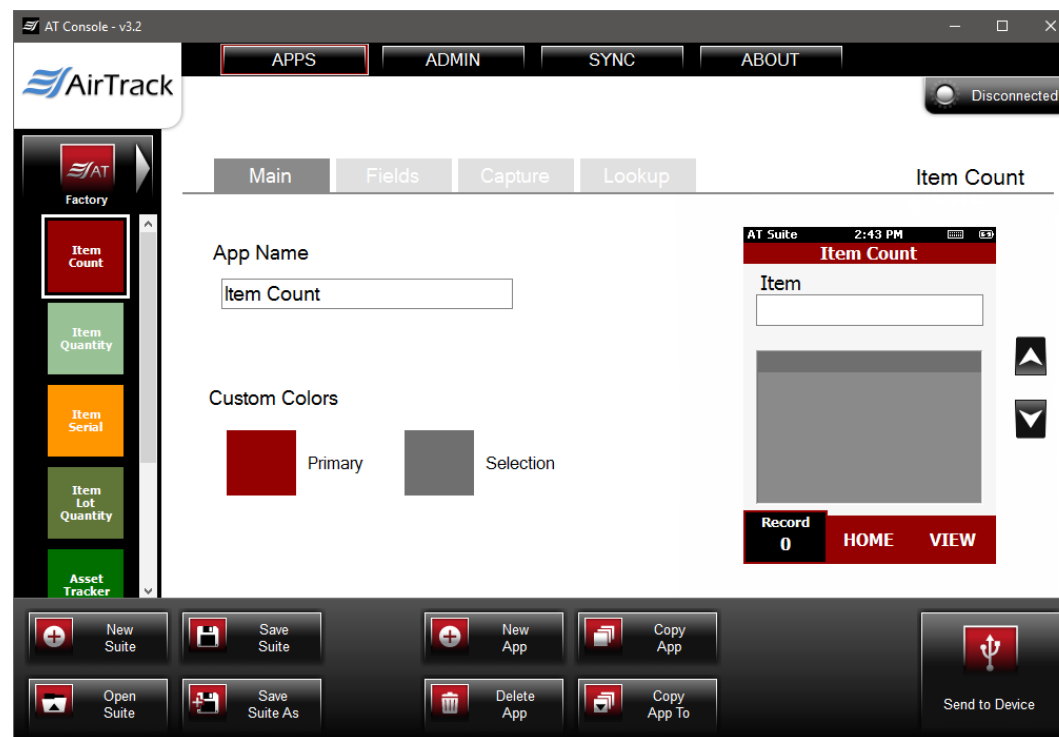


AT Console is easy-to-use, application design software developed specifically to work in conjunction with AirTrack's AT Suite.

Create. Distribute. Collect.

Every MB-1 handheld computer comes with AT Suite, which includes seven (7) pre-developed applications for common data collection tasks. Now MB-1 users can use AT Console to modify these applications, or create their own from scratch.



Introduction

This document briefly covers how to use AT Console and the features and settings. Be sure to read this document in its entirety before attempting to use AirTrack's AT Console with a AT Suite compatible device.

What is the difference between an **"App"** and a **"Suite"**?

"Apps" are single applications running on the device used to collect and store data. In most cases, multiple apps would be utilized to handle various operations. For example, the 'Item_Quantity' app is one of the most widely used apps and the most direct means to take a basic inventory count, it produces a data file showing what items are in stock, the relative quantities, and requires minimal input from the mobile worker(s). Other operations will require additional input, for example, if you also need to know the specific location for each item in inventory, the 'Item_Lot_Quantity' app would be a better fit. Apps can be used in a variety of ways and provide the MB-1 the flexibility to handle virtually any data collection operation.

"Suite" files are simply collections of individual apps. Suite files allow you to easily manage and edit multiple apps from within a single 'store-house' file and provide an effortless means for device deployment. Since you can store all pertinent apps in a single suite file, you can configure devices with the push of a button.

Modify an Existing Factory Application

1. Create a New Suite (where you will be saving the modified App). Skip this step if you already have a custom Suite file.
2. Select '**Factory**' from the Suite Menu, and click the App you wish to modify.
3. Click '**Copy App To**' and select the applicable Suite.
4. Select '**File**' from the Suite Menu and open applicable Suite.
5. Select the App. You are now ready to begin modifying it.
6. From the **Main** tab: You can rename the app and change its coloring scheme.
7. From the **Fields** tab: Design the form factor of the app. Make changes to the look, feel, and modus operandi of the app. Edit fields and field properties (change the sequence of fields for better workflow, apply field attributes to improve data accuracy, add text labels to help instruct users, employ date/time stamps, and much more).
8. From the **Capture** tab: Format the output data file to match your software needs. Streamline moving the data from the device to your software by defining output file names, paths, and formats. Choose standard text formats (i.e. csv, txt) or create custom formats using capture field prefix/suffix options.
9. When finished, click '**Send to Device**'.

Write a New Application from Scratch

1. Create a New Suite (where you will be saving the created App). Skip this step if you already have a custom Suite file.
2. Click **New App**.
3. From the **Main** tab: You can rename the app and change its coloring scheme.
4. From the **Fields** tab: Design the form factor of the app. Make changes to the look, feel, and modus operandi of the app. Edit fields and field properties (change the sequence of fields for better workflow, apply field attributes to improve data accuracy, add text labels to help instruct users, employ date/time stamps, and much more).
5. From the **Capture** tab: Format the output data file to match your software needs. Streamline moving the data from the device to your software by defining output file names, paths, and formats. Choose standard text formats (i.e. csv, txt) or create custom formats using capture field prefix/suffix options.
6. When finished, click '**Send to Device**'.

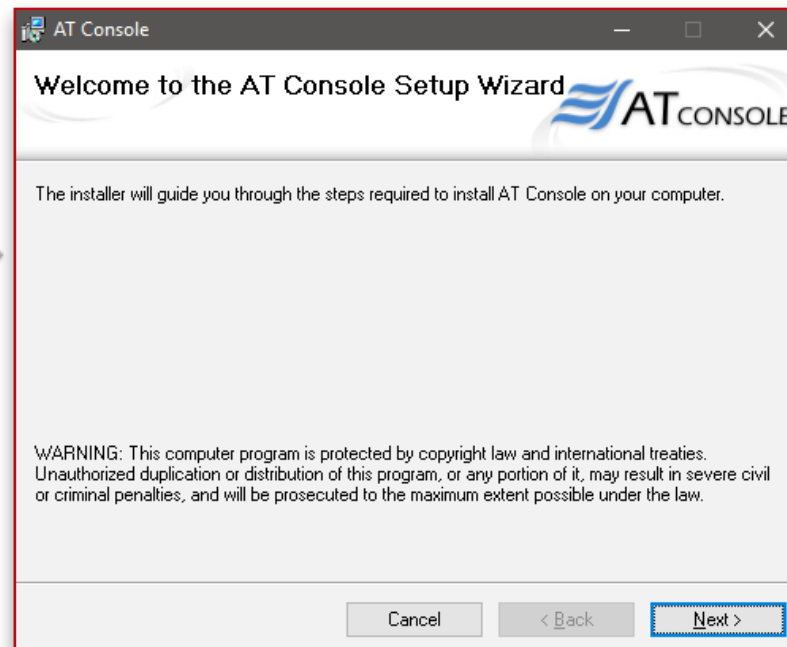
Installing AT Console

Download AT Console.

Download the .msi
Click "Yes", when
installer package,
instructions of the

Download AT Console at
www.airtrack.com/airtrack-mb-1

installer package.
prompted to run the
and follow the
installation wizard.



'Application' Interface

APPLICATION

The 'APPLICATION' portion of AT Console is for designing applications to use with AT Suite and the MB-1.

Suite Menu

Select the Suite with which to work.

File

Open a suite from the PC. Select a valid .xml file from the dialog box that appears.

Factory

AT Suite Apps

Device

Open the suite currently residing on the connected device.

Suite App List

The list of apps located within the selected suite.

Suite Tools

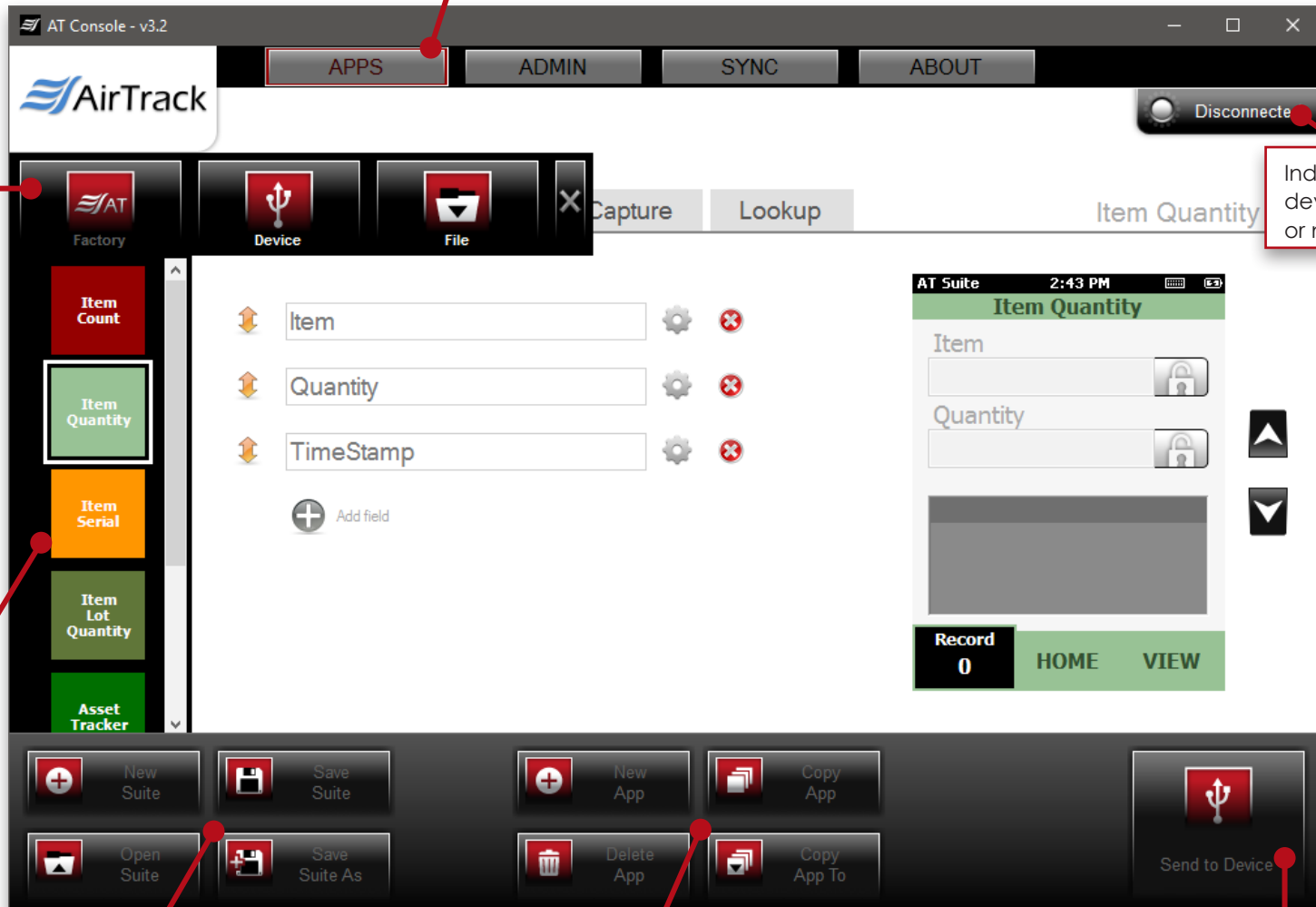
Create a new, open an existing, or save an application suite. Also, use 'Save Suite As' to save a copy of a suite.

Application Tools

Add a new or delete an app within the selected suite. Also, copy the selected app within the current suite or copy the selected app to a different suite.

Send to Device

Send the current suite to the connected device.



Indicates whether a device is connected or not connected.

Application > 'Main' Tab

'Main' Tab

Under the 'Main' tab, set the app's name and color scheme.

"My Suite"

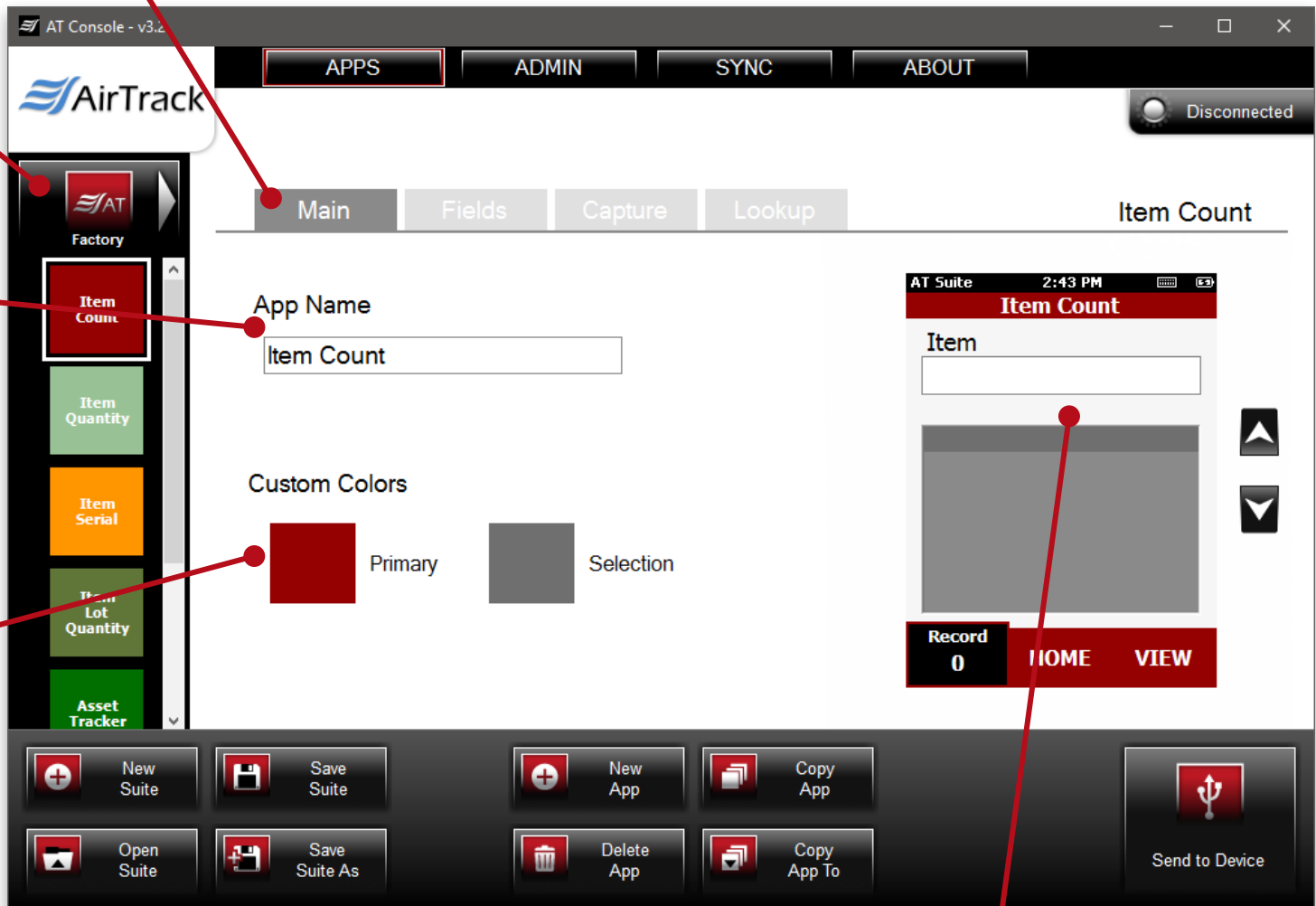
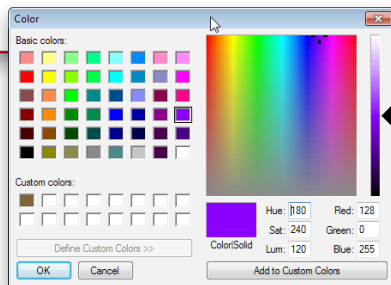
"My Suite" is a custom app suite that was selected and loaded via the 'File' option.

App Name

Set the name of an app.

Custom Colors

Set the primary and selection colors for an app. Select colors from the dialog box that appears.



Preview

Preview all changes in real-time.

Application > 'Fields' Tab

'Fields' Tab

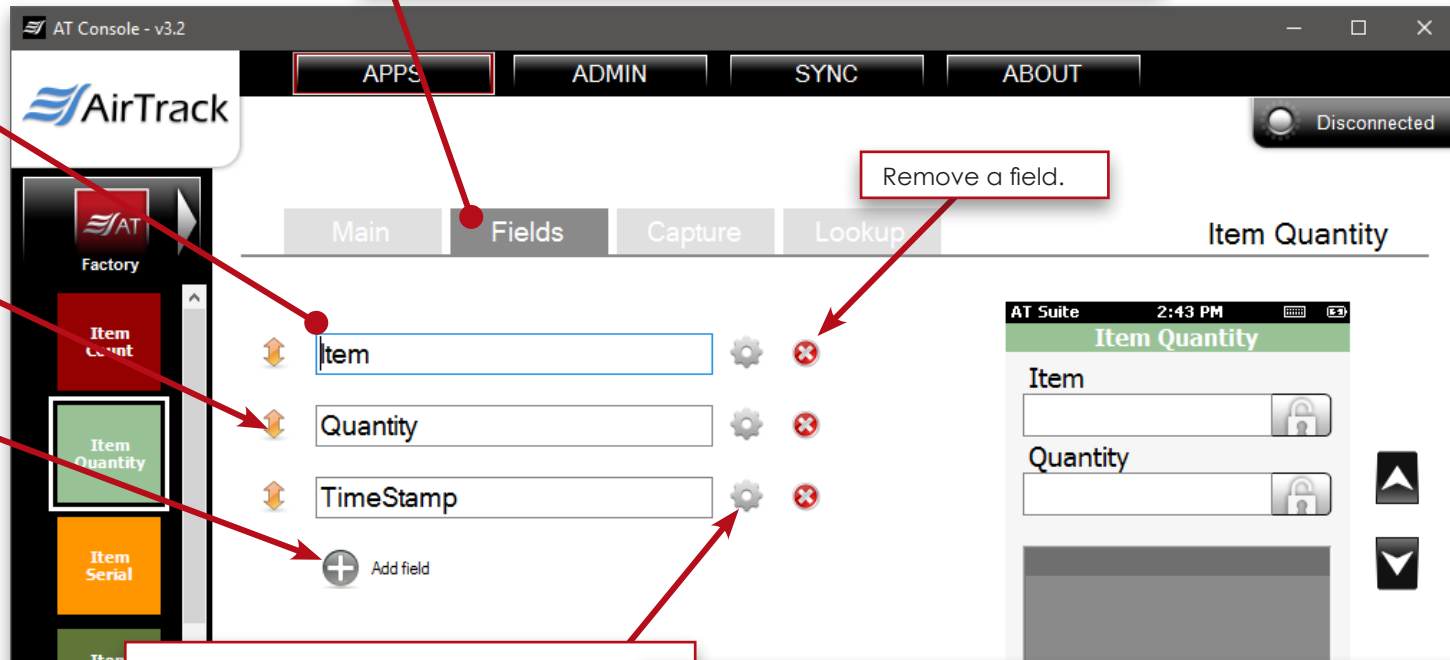
Under the 'Fields' tab, users can add and remove fields. Also, users can set the name and order of each field within the app.

Set the name of each individual field.

Click and drag the up/down arrow icon to move fields.

Add a field.

Remove a field.



Field Settings

Set 'Field Type' to a text field, radio button or label. Select the input method to receive data from the keyboard, scanner or both. Format the data by setting allowable characters, character case and default value. Other properties include setting a lockable field, 'lock field on data entry' behavior, hiding a field and field length.

(Field Settings dialog box seen on right)

Item

Field Type: Input Field

Input Type

- ☒ Keyboard / Scanner
- ☐ Keyboard only
- ☐ Scanner only
- ☐ None

Allowable characters: Any

Character case: As-Entered

Default Value

- ☐ Text:
- ☐ Lookup:

Properties

- ☒ Allow duplicates
- ☒ Lockable
- ☐ Locked on input
- ☐ Hidden

MIN Length: 1

MAX Length: 30

Field Size: 1

OK Cancel

Application > 'Capture' Tab

'Capture' Tab

Under the 'Capture' tab, users can link data columns to the appropriate fields, set the data file path, sort the data file columns and more.

Data File Path
Set the path of the data file.

Sort Data
Click and drag the up/down arrow icon to move fields or columns within the data file

Capture Link
Set whether or not the field data should be captured.

Field Settings
Add a prefix or suffix to the field data and column name.

Data File Settings
See details on next page.

Field	Capture	Column Name
Item	<input checked="" type="checkbox"/>	Item
Quantity	<input checked="" type="checkbox"/>	Quantity
TimeStamp	<input checked="" type="checkbox"/>	TimeStamp

Application > 'Capture' Tab > Data File Settings

Data File Name
Predefine a file name.

Data File Format
Set the file format.

Data File Properties
Choose optional output file properties.
(See the popup box below.)

Data File Properties
File Options

- ☐ Lock file on device
- ☐ Append data file to existing file
- ☐ Remove column names

File Name Tags
Click and drag a compass icon to the file name field to include pre-defined tags.

File Output Path
Predefine the path to which the data file will be saved on the PC or network.

Data File Properties

Data File Output

☒ Predefine: ASBS_[DT=yyyyMMdd][NN]_M.csv Options

File Format: Comma Separated Values (*.csv) {FieldData1,"Field,Data2"}

Output Path

☐ Predefine: Browse

Set Path Root: Desktop Documents

Tags (Drag to text box)

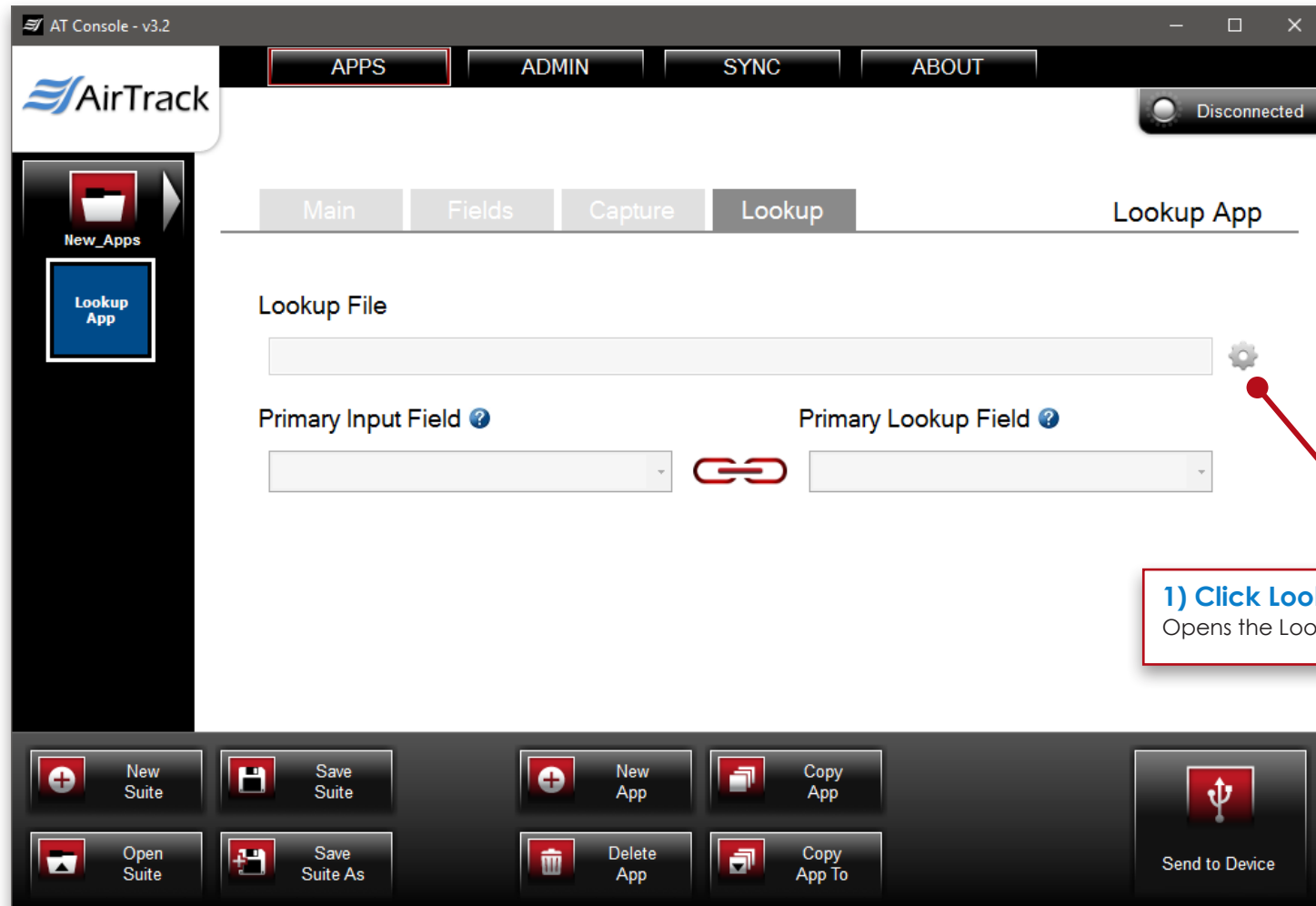
Serial Number Increment (NN = 00-99) Date-time: yyyyMMdd

OK Cancel

Application > 'Lookup' Tab (How to Use a Lookup File)

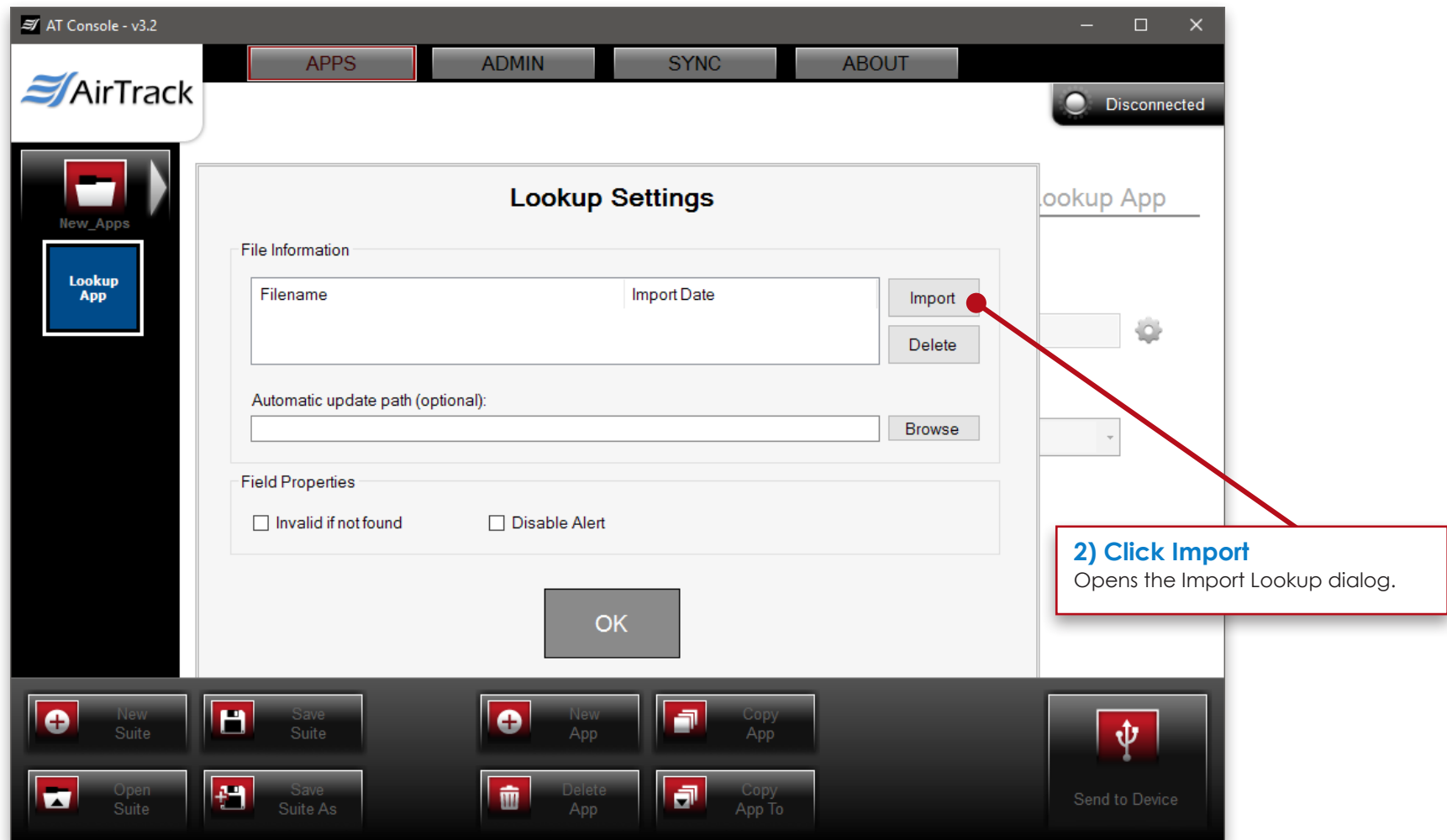
How to Use a Lookup File

The AT Console allows you to upload a data file, such as an Excel® spreadsheet, to use as a 'lookup' for matching up scanned data with the uploaded information.

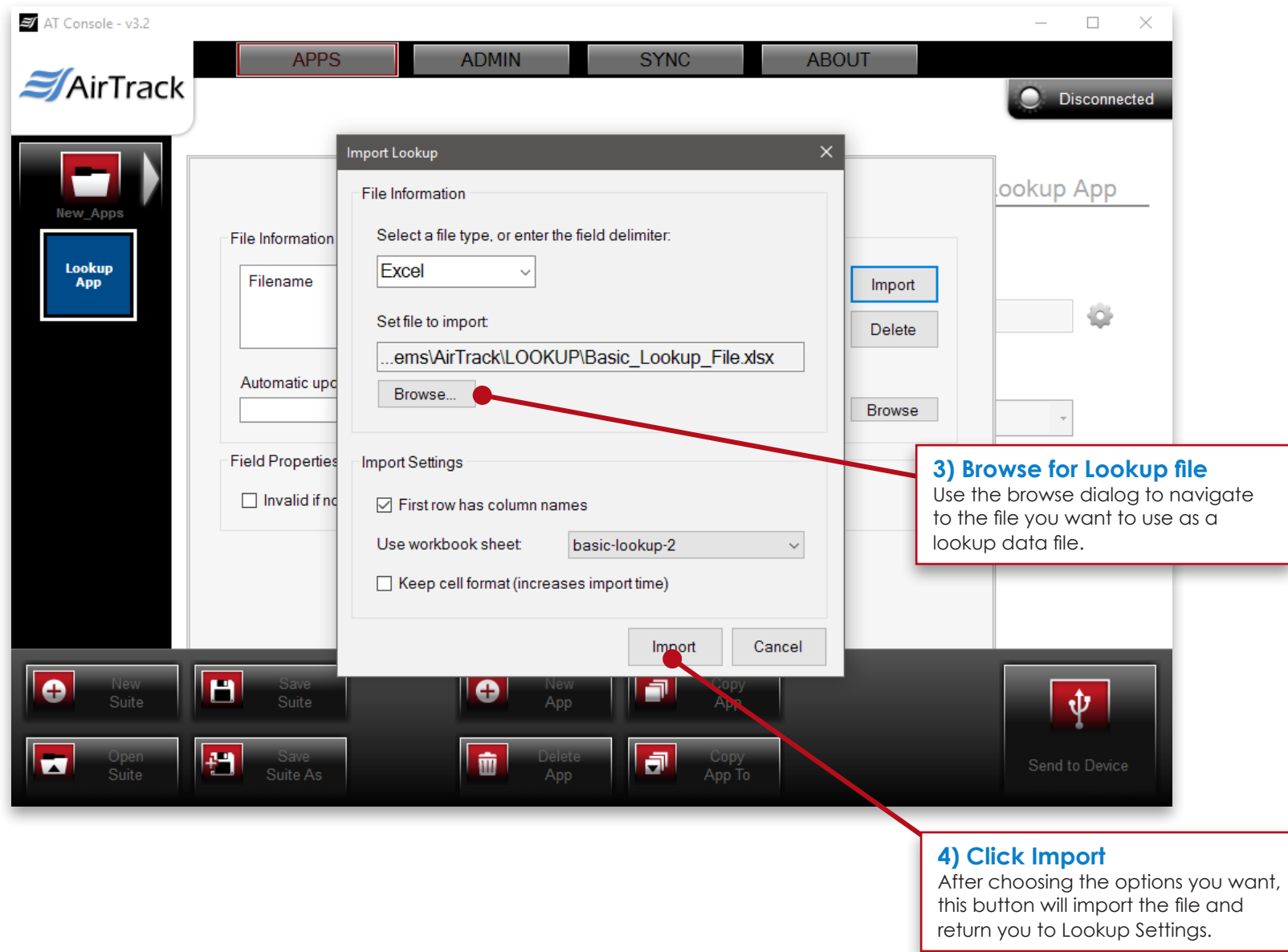


1) Click Lookup File options
Opens the Lookup Settings dialog.

Application > 'Lookup' Tab > (How to Use a Lookup File: Lookup Settings)



Application > 'Lookup' Tab > (How to Use a Lookup File: Lookup Settings > Import Lookup)



3) Browse for Lookup file
Use the browse dialog to navigate to the file you want to use as a lookup data file.

4) Click Import
After choosing the options you want, this button will import the file and return you to Lookup Settings.

Application > 'Lookup' Tab > (How to Use a Lookup File: Lookup Settings)

Lookup Settings

File Information

Filename	Import Date	Import
Basic_Lookup_File.xlsx	2/21/2017 1:41:37 PM	Delete

Automatic update path (optional): Browse

Field Properties

☒ Invalid if not found ☐ Disable Alert

NOTE:
The default setting (leaving both boxes unchecked) alerts when a matching value is not found but will still allow progress.

OK

5) Set Field Properties (if applicable)
"Invalid if not found" option alerts and does not allow progress when a matching value is found. "Disable Alert" option will disable any alert if a matching value is not found.

6) Click OK

Application > 'Lookup' Tab > (How to Use a Lookup File: Linking Primary Fields)

7) Link Primary Input Field and Primary Lookup Field

These are the fields that will be used to find a matching value.

The screenshot shows the AirTrack AT Console v3.2 interface. The 'Lookup' tab is selected, and the 'Lookup File' is 'Basic_Lookup_File.xlsx'. The 'Primary Input Field' is 'Item' and the 'Primary Lookup Field' is 'Item'. A red link icon connects the two fields. Below, a table shows 19 rows of data with 'Item' and 'Description' columns.

Item	Description
303	three o three
304	three o four
305	three o five
306	three o six
307	three o seven

Application > 'Lookup' Tab > (How to Use a Lookup File: Accessing Field Settings)

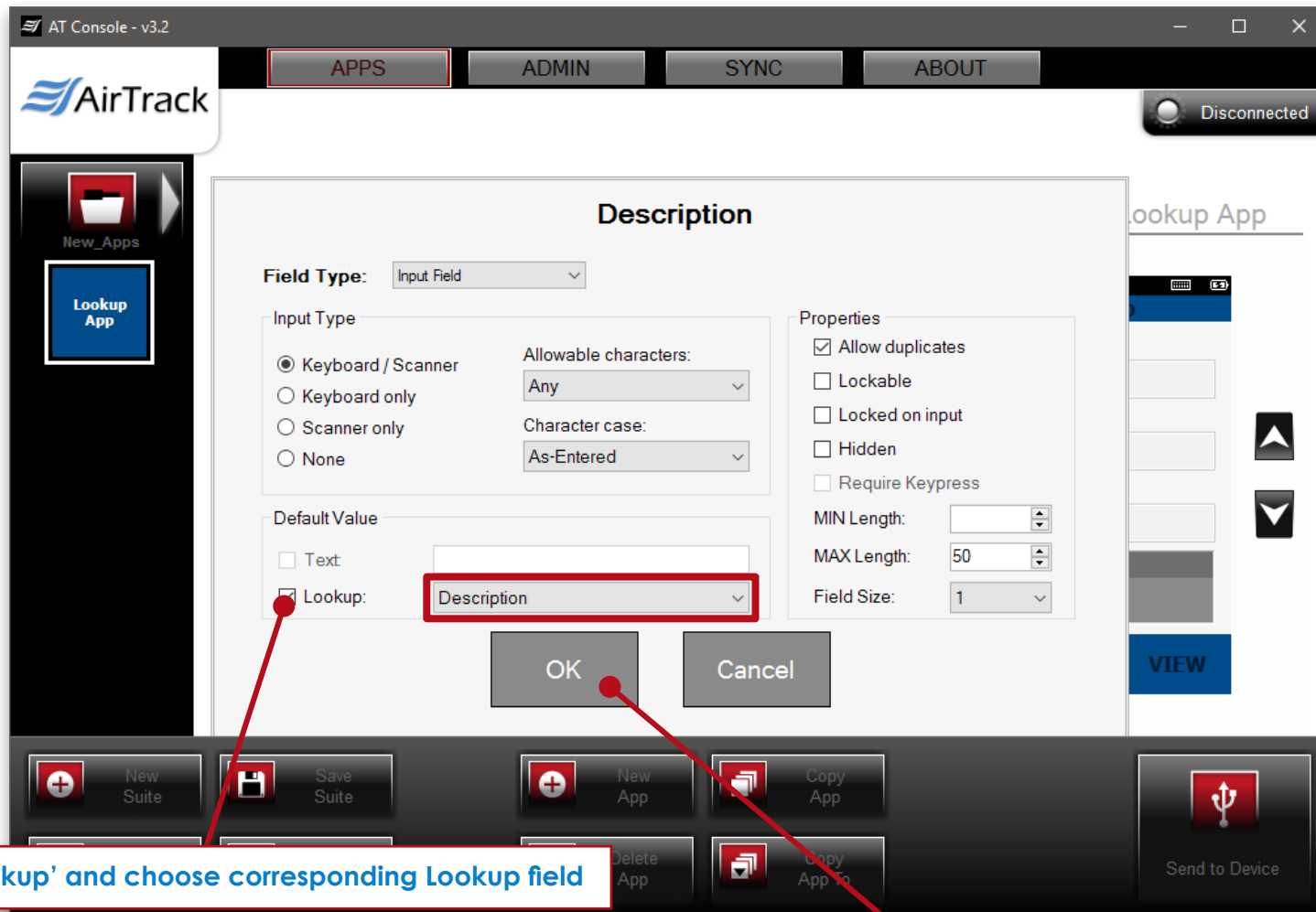
Displaying Lookup Data

8) Click Fields Tab
The menu for field setup is revealed.

The screenshot shows the AirTrack AT Console v3.2 interface. At the top, there are tabs for APPS, ADMIN, SYNC, and ABOUT. The APPS tab is selected. Below this, there are sub-tabs: Main, Fields, Capture, and Lookup. The Fields tab is selected and highlighted with a red box. To the left of the main content area, there is a sidebar with a 'New_Apps' button and a 'Lookup App' button. The main content area displays a list of fields for the 'Lookup App': Item, Description, and Price. Each field has a gear icon (options) and a red 'X' icon (delete). A red line points from the '8) Click Fields Tab' instruction to the Fields tab. Another red line points from the '9) Click field options' instruction to the gear icon for the 'Description' field. On the right side of the main content area, there is a preview of the 'Lookup App' interface, showing the same fields (Item, Description, Price) and a 'Record 0' indicator. At the bottom of the interface, there is a toolbar with buttons for New Suite, Save Suite, New App, Copy App, Open Suite, Save Suite As, Delete App, Copy App To, and Send to Device.

9) Click field options
(for associated field)

Application > 'Lookup' Tab > (How to Use a Lookup File: Accessing Field Settings > Changing settings of a Field)



10) Check 'Lookup' and choose corresponding Lookup field

11) Click OK

Application > 'Lookup' Tab > (How to Use a Lookup File: Accessing Field Settings > Capture Options & Saving)

Writing Lookup Data to Capture File

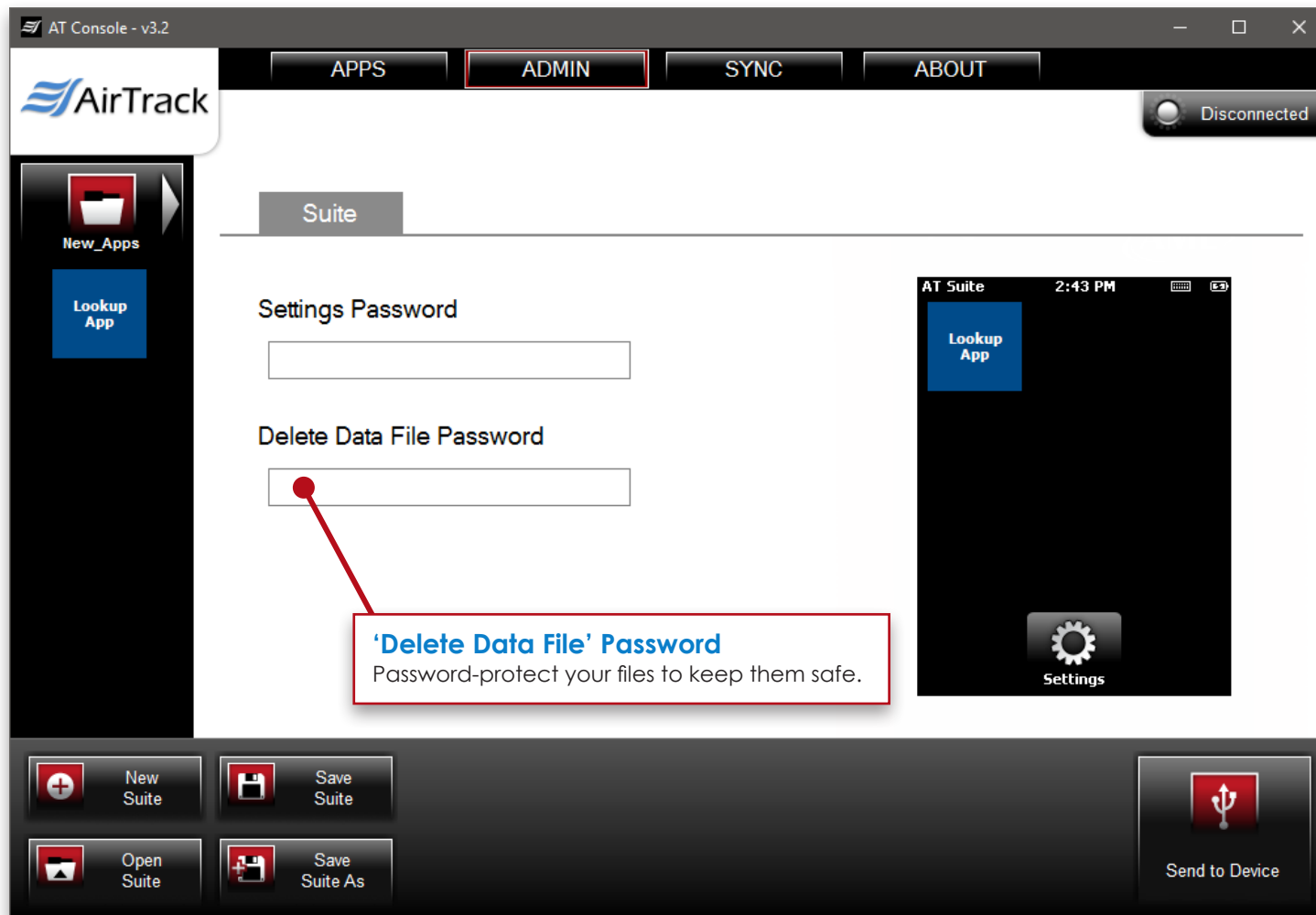
12) Click Capture Tab

13) Uncheck any fields you do not want writing to the capture file.

14) Click 'Save Suite'

Field	Capture	Column Name
Item	<input checked="" type="checkbox"/>	Item
Description	<input type="checkbox"/>	
Price	<input checked="" type="checkbox"/>	Price

Application > 'Admin' Tab > 'Delete Data File Password'



'Sync' Interface

SYNC

The 'SYNC' portion of AT Console is for transferring data files from the device to the PC.

Device Data Files

Select the data files to be queued for transfer.

Move to Queue

Move selected device data files to transfer queue on right.

Move All to Queue

Move all device data files to transfer queue on right.

Clear List

Click to clear transfer queue on right.

Refresh

Click to refresh the device data file list.

Save to Path

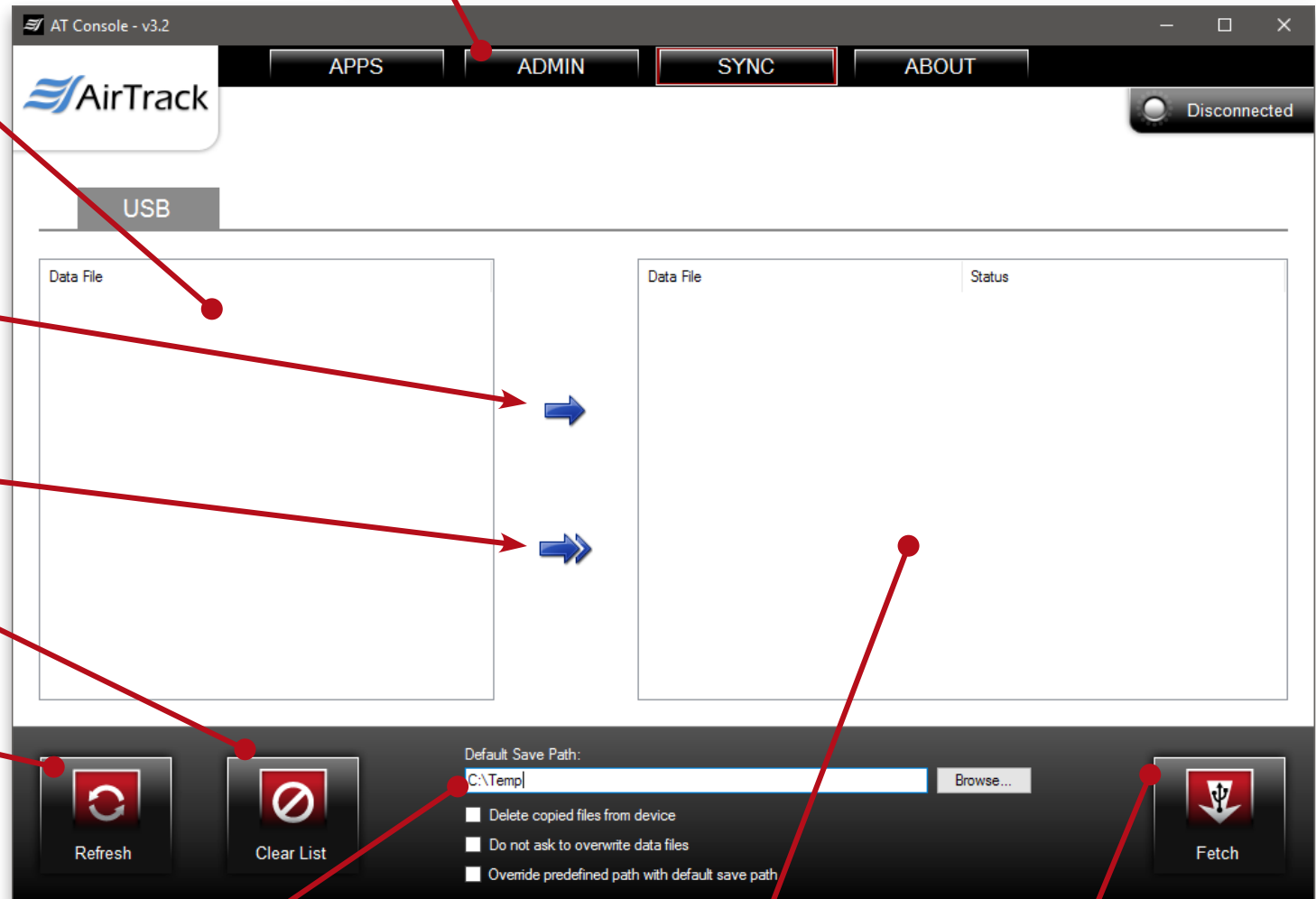
Set the path to save the queued data files. Also, set other procedural options like deleting or overwriting data upon transfer.

Transfer Queue

List of data files queued for transfer from the connected device.

Fetch

Once the proper files are in the transfer queue, click 'Fetch' to download the files.



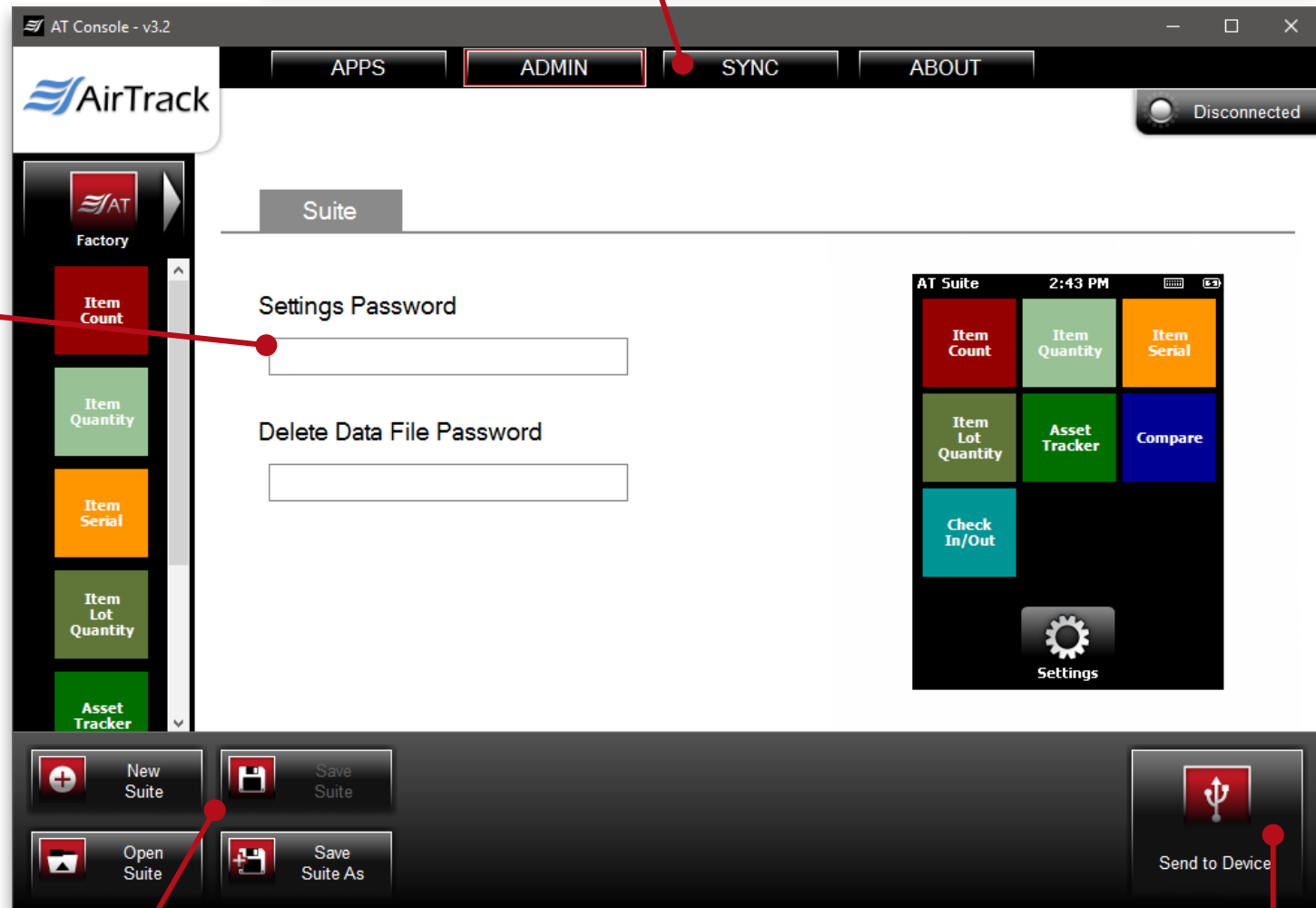
'Admin' Tab

ADMIN

The 'ADMIN' portion of AT Console is for locking the device with an administrative password.

Settings Password

Create a password to protect devices from tampering.



Suite Tools

Create a new, open an existing or save an application suite. Also, use 'Save Suite As' to save a copy of a suite.

Send to Device

Send the password to the connected device.

© 2016 American Microsystems, Ltd. All rights reserved. American Microsystems, Ltd. reserves the right to make changes in specifications and other information contained in this document without prior notice, and the reader should in all cases consult American Microsystems, Ltd. to determine whether any such changes have been made. The information in this publication does not represent a commitment on the part of American Microsystems, Ltd.

American Microsystems, Ltd. shall not be liable for technical or editorial errors or omissions contained herein; nor for incidental or consequential damages resulting from the furnishing, performance, or use of this material.

This document contains proprietary information which is protected by copyright.

All rights are reserved. No part of this document may be photocopied, reproduced, or translated into another language without the prior written consent of American Microsystems, Ltd.